



August 15, 2019

News and Updates from the Glacier Hills Foundation

The *Foundation Buzz* is a monthly newsletter intended to bring you up-to-date Foundation news. If you have any questions or would like more information, please contact us by [email](#) or telephone us at **(734) 929-6703**.

Child Development Center Opens for Business

The new Glacier Hills YMCA Child Development Center officially opened for business on July 22. Opening day welcomed 13 students...children of the Glacier Hills staff.

We are very lucky to have this wonderful center right on our campus for the convenience of our staff who have small children.

Financial assistance is available to qualifying staff at Glacier Hills thanks to the generosity of donors to the Glacier Hills Foundation and the YMCA Annual Campaign.

Tia Parks, Staff Recruiter at Glacier Hills, brings her daughter Lilliana to work with her each day. "It is so convenient for me to bring Lilliana here with me. It saves me 1-1/2 hours of travel time each day. Yesterday, I brought her down to my office and we had lunch together. When I took her back, it was nap time (for her, not me). It was very natural for both of us."



Insights – John Brueger



Our new program *Insights* kicked off in July and proved very successful with both audiences – staff and residents. John Brueger presented to residents on July 30. If you couldn't make that presentation, here it is for you. Next up for staff audience is Judith Laikin Elkin on August 19 at noon in the Renaissance Room in The Meadows.

2019 Fall / Winter Scholarship Recipients

Our annual Scholarship Luncheon took place on August 1, and it was a real success. Approximately 75 guests attended, including past and present scholars, donors, residents, and board members. We even saw a few family members of the scholars, which is always super special.

Thanks very much to **Mary Ann McDonald** for her leadership of the Scholarship Committee and her comments at the luncheon. We are also grateful to **Dale Berry** and **Laura Carroll** for their remarks, and to scholars **Emily Abela** and **Manuela Yost** for sharing their stories.

Thank you to our generous donors and Foundation board members for making this all possible!

We are pleased to announce the following fall and winter scholarship recipients, who received their checks at the luncheon.

Emily Abela

Sales Manager

Master of Public Administration, Eastern Michigan University

Brehm Endowed Scholarship, Charles & Betty Overberger Endowed Scholarship (\$4,000)



Amanda Archer

Wait Staff

Nursing, Concordia University

Barbara Craig Scholarship, Glacier Hills Scholarship (\$3,000)

Andrew Birchler

CNA-Manor

Nursing, Eastern Michigan University

Robert B. Dunlap Memorial Scholarship, Jordan Hopkins Scholarship, Glacier Hills Scholarship (\$4,000)



Christopher Bryant

Wait Staff

Criminology and Law Enforcement, Eastern Michigan University

Glacier Hills Scholarship (\$510)

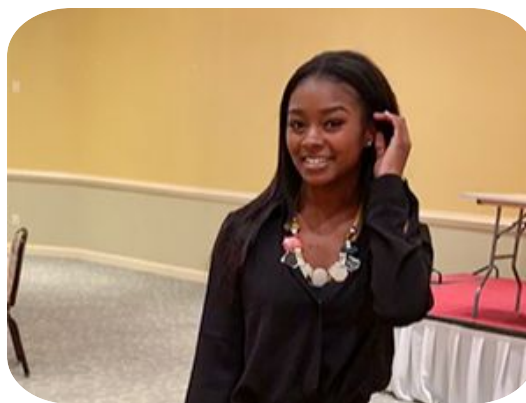


Jenieve Butler

Wait Staff

Psychology, Central Michigan University

June Bennett Scholarship, Doug & Lucia Freeth Scholarship, Glacier Hills Scholarship (\$3,000)



Aqilah Campbell

CNA-Care and Rehab Center

Medical Assistant, Ross Medical Education Center

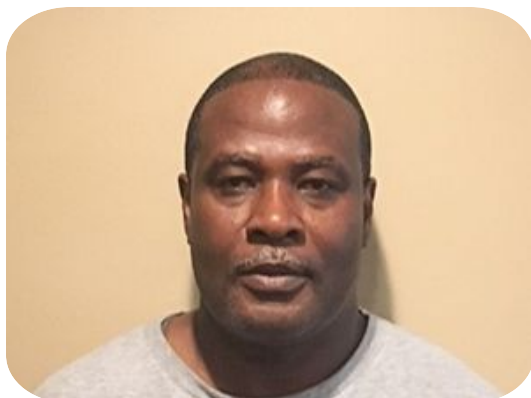
Glacier Hills Scholarship (\$3,000)

Esperanca De Abreu

Wellness Assistant-Eva's House

Nursing, Athena Career Academy

Virginia Riddle Scholarship, Glacier Hills Scholarship (\$3,934)



Gabriel Hassan

CNA-Skilled Nursing

Nursing, Monroe County Community College

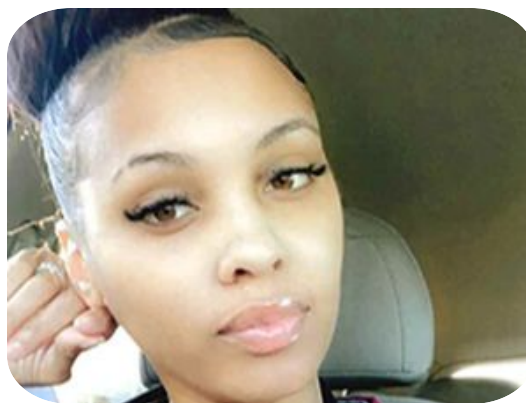
Molly Dobson Scholarship (\$3,500)

Delorean Kinney

CNA-Skilled Nursing

Nursing, Dorsey Schools

Robert B. Dunlap Memorial Scholarship (\$3,000)



Value Ewansubhor

CNA-Manor

Nursing, Toledo School of Practical Nursing

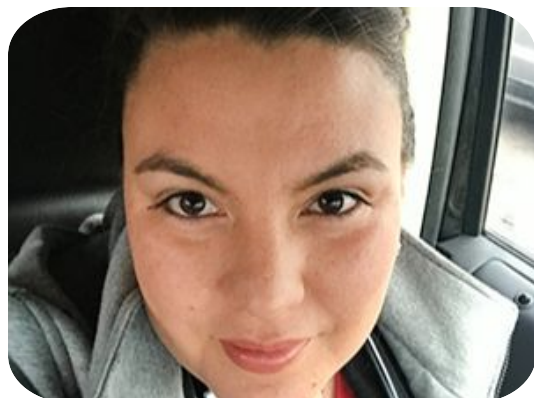
Charles & Betty Overberger Endowed
Scholarship (\$500)

Quanesha Rodgers

Med Tech-Manor

Radiography, Washtenaw Community College

Rebecca Bonnell Scholarship, Glacier Hills
Scholarship (\$2,720)



Manuela Yost

CNA-Care & Rehab Center

Nursing, Concordia University

Barbara Craig Scholarship, Glacier Hills
Scholarship (\$4,000)

Update on Glacier Hills Legacy Fund by AAACF

When **Glacier Hills** and **Trinity** affiliated in 2016, a transformational \$30,000,000 was distributed as a result of the affiliation. Of that total amount, \$10,000,000 came to Glacier Hills: \$3,750,000 to address immediate infrastructure and capital needs, and \$6,250,000 to the Glacier Hills Foundation to fund future projects – both programmatic and capital – throughout the campus in the form of campus grants.

Of the remaining \$20,000,000 from the affiliation, \$18,250,000 went to the **Ann Arbor Area Community Foundation** to fund a study that would reveal the needs of vulnerable seniors in the county and to form an endowment that would address those needs. The endowed fund was named the Glacier Hills Legacy Fund, and it is intended solely to serve vulnerable seniors in Washtenaw County, to ensure every senior in the community has the opportunity for a long and vibrant life.

On August 6, we welcomed Neel Hajra and Jillian Rosen from the AAACF to Glacier Hills to give us an update on the Glacier Hills Legacy Fund and all of the good it is doing in the community. A volunteer advisory committee establishes priorities, reviews grant proposals, and recommends funding determinations. Ray Rabidoux, former President and CEO of Glacier Hills, served as chair of the advisory committee for the first 3 years, and Margie Reynolds, former Glacier Hills board member, has now stepped in as the new chair.

The original study found **five areas of specific need** in the county for funding priorities, which are now addressed through grants totaling \$750,000 annually from that endowed fund. The five areas include:

- **Safe and Affordable Housing**
- **Independent Living Supports and Caregiving**
- **Health and Wellness**
- **Transportation**
- **Partnerships**

The advisory committee also recommended that \$2,000,000, with an additional \$500,000 from the **Ralph C. Wilson, Jr. Foundation**, be made available through a competitive process to address community innovations. Named the **Vital Seniors Community Innovation Competition**, it represents the largest competition of this kind in North America. Four organizations in Washtenaw County were eventually awarded a total of \$1,000,000 through this competition. They include **Ypsilanti Meals on Wheels in partnership with Habitat for Humanity of Huron Valley, Area Agency on Aging 1-B, Chelsea Senior Center, and Jewish Family Services of Washtenaw County**. The additional \$1,500,000 will continue to support the work of the prize winners.

Proud is not even close to how we all should feel at being part of something so vital, so important, and so impactful in our community. We must continue to remind ourselves that this all was made possible through the affiliation of Glacier Hills and Trinity to make a better community for all seniors.

Donors of Health Clinic Honored

When donors come together to make something possible through their support, we are delighted to recognize them. As a result of the **Healthy Generations** campaign, 75 donors made gifts that totaled over **\$202,000** to complete the funding to establish the clinic. We are extremely grateful for this support and especially for what the support has accomplished: by July 31, there had already been 238 clinic visits between both

IHA and UM physicians. Stop by our health clinic on the 1st floor of the Manor to view the new donor wall.



Mark Your Calendar

Insights Presentation for Employees- Judith Laikin Elkin

August 19

Glacier Hills Foundation Board Meeting

August 27

Announcement of Annual Grant Awards

September (Funding begins October 1)

Did You Know?

If you wish to make a credit card gift to support a program or project at Glacier Hills, you may do so any time through the website. Click below to go directly to the "Donate Now" page or go to glacierhills.org/foundation, where you may enter your gift amount and click donate with **PayPal** or **debit or credit card**. If you wish to be sure your gift is in memory or honor of someone, or is directed to your specific purpose, enter the text in the "Add special instructions..." section. And, of course, you can always just call our office at (734) 929-6759 or 929-6703 and we will guide you through the process over the telephone.

Donate Now

Art Across Campus



In celebration of the beautifully warm and characteristically tempestuous summer we are experiencing this year, let's explore the Michigan landscape in the Glacier Hills Collection. Landscape art has a wonderful way of carving out a slice of the world and saving it for later. The newly completed mural by [TreeTown Murals](#) on the generator outside of the Wicker room does just that, restoring the view with a panoramic array of local flora and fauna.



When the weather is too poor for a walk outside, the interior of Glacier Hills is overflowing with Michigan landscapes. Of note is the oeuvre of [Ava Gilzow](#), a local artist who was known for her pastel handlings of nature scenes. Examples of her work are dotted across campus, with a large selection in residential corridors of the Meadows. When you spot one, pay particular attention to her distinctive and skilled treatment of clouds as you take in the scenic compositions.

[Sara Head, Art Coordinator](#)



Copyright © 2019, Glacier Hills, Inc., All rights reserved.

Our mailing address is:

1200 Earhart Rd., Ann Arbor, MI 48105

Want to change how you receive these emails?

You can [update your preferences](#) or [unsubscribe from this list](#).